

# LkSG: Corporate Due Diligence in the Coffee Sector

Cecafé's 10th Coffee Dinner & Summit | 3 July 2025

Dr. Charlotte Heyl | Director Sustainability | German Coffee Association



# About us

The German Coffee Association represents more than 380 small and large companies along the entire coffee value chain.

**We are the largest network for coffee companies in Europe.**



 DEUTSCHER  
KAFFEEVERBAND  
WACH. HEISS. STARK.





sustainability  
organisations



green coffee traders,  
agents and brokers



coffee-financing banks



shipping & logistics  
com-panies /  
warehousing prov.



packaging  
manufacturers



food laboratories



manufacturers of roasting  
facilities & equipment tech.



all large  
brand roasters



more than 180  
Specialty roasters



manufacturers of  
instant coffee



decaf  
decaffeinator



producers/dealers of  
coffee and vending  
machines



bakeries



coffee online shops



retail



# LIEFERKETTENSORGfaltSPFLICHTENGesetz (LkSG)


 DEUTSCHER  
KAFFEEVERBAND  
WACH. HEISS. STARK.

# 36

German Act on Corporate Due Diligence Obligations for the Prevention of Human Rights  
Violations in Supply Chains



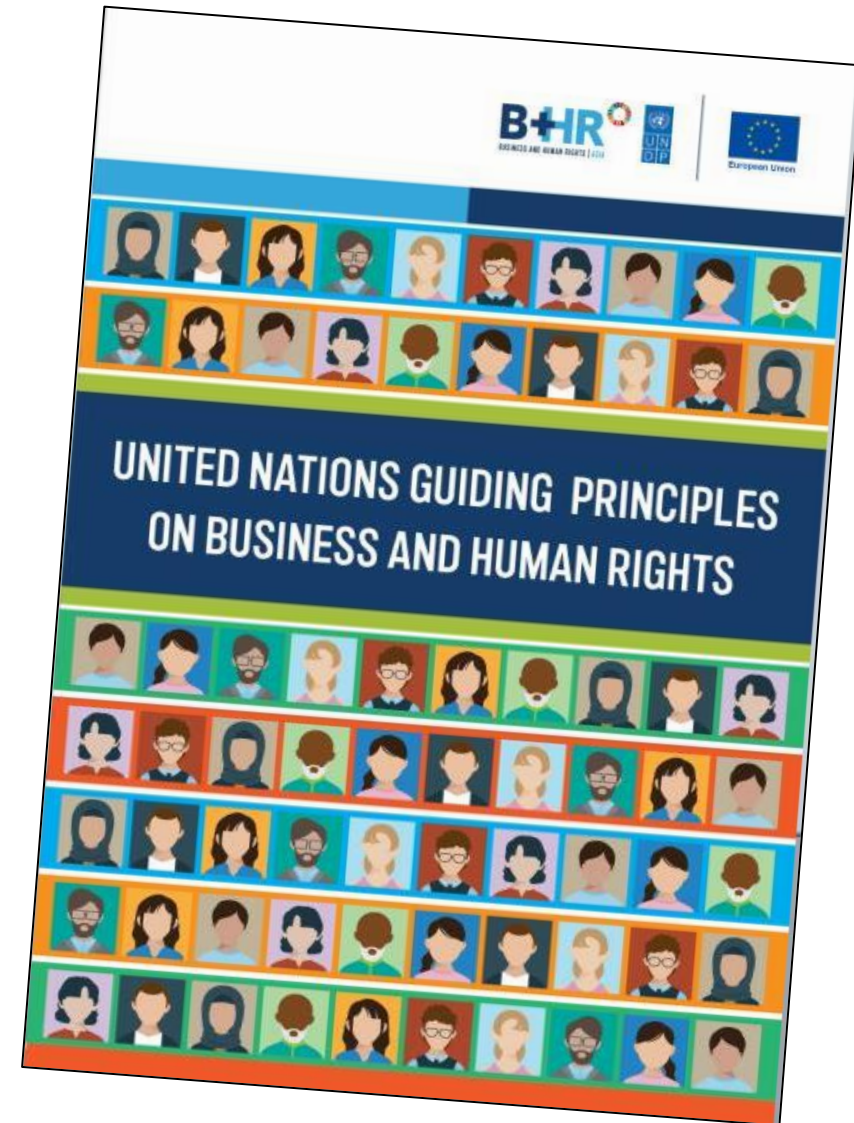
# 24 April 2013: Rana Plaza, Bangladesh

- 
- Collapse of a garment factory supplying global fashion brands
  - Over 1,130 fatalities and more than 2,500 injuries
  - The disaster was preventable; large cracks in the building had been visible beforehand



# Why do we have a law with 36 letters?

- The LkSG is part of a global legal standard-setting process
- It represents Germany's national implementation of the UN Guiding Principles on Business and Human Rights



# German Act on Corporate Due Diligence Obligations (LkSG)





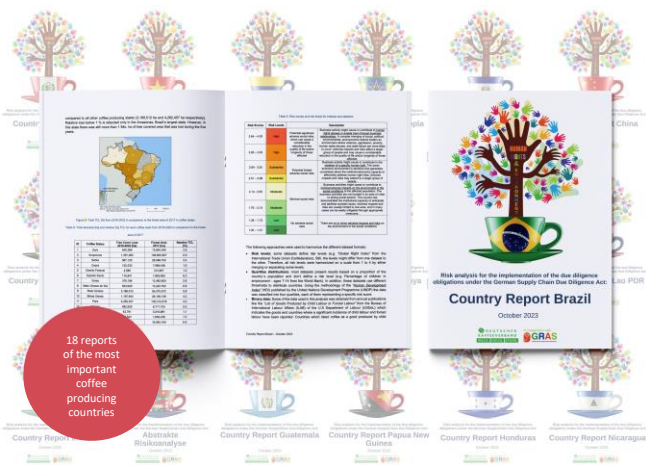
## The German Coffee Association's collaborative approach to due diligence

- **Objective: Practical support** for the implementation of the LkSG
- **Why it matters?**  
Human rights, labour rights, and environmental issues **impact the entire sector** and are **critical to its future**
- **Our Conviction:**  
**Collaboration is the strongest path forward**



# Our approach to Due Diligence legislations: Offering practical support for the implementation

## Risk Analysis of 18 most important coffee producing countries



## Joint Grievance Mechanism



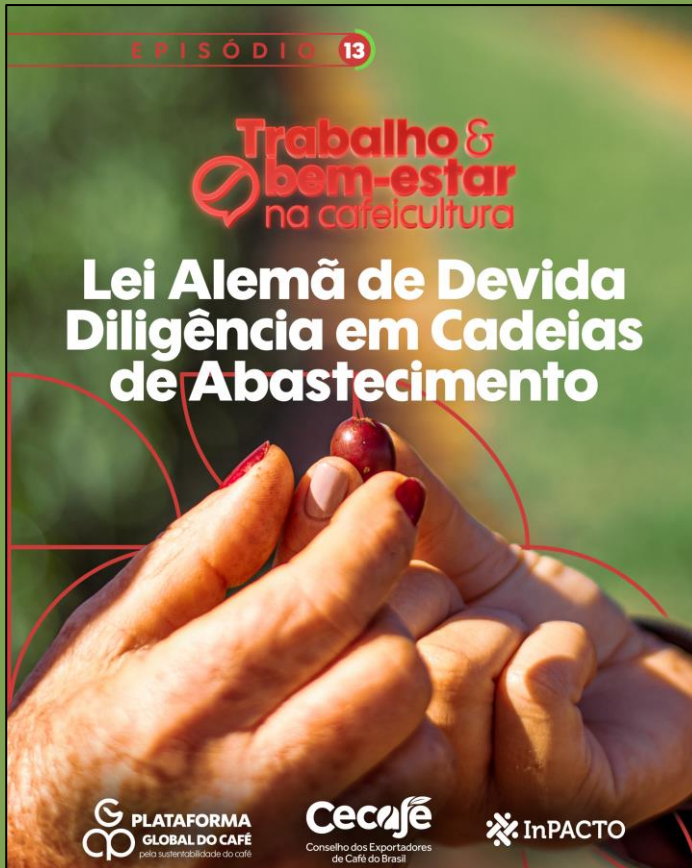
## Due Diligence Project in Brazil





# Awareness-raising with Brazilian partners

## 1.) Audio course + visuals on LkSG (distributed via whatsapp)



## 2.) Videocourse on Human Rights, Due Diligence Legislations and Synergies with Brazilian Legislation



Curso desenvolvido através da Iniciativa de Ação Coletiva "Bem-Estar Social" da Plataforma Global do Café, criada e coordenada coletivamente com o Cecafe e o InPACTO



Apoio:



### Key learnings:

- Raising awareness of due diligence legislations is essential
- Leveraging existing initiatives in the coffee sector enhances effectiveness





**Thank you for your attention!**

**Dr. Charlotte Heyl**  
Director Sustainability